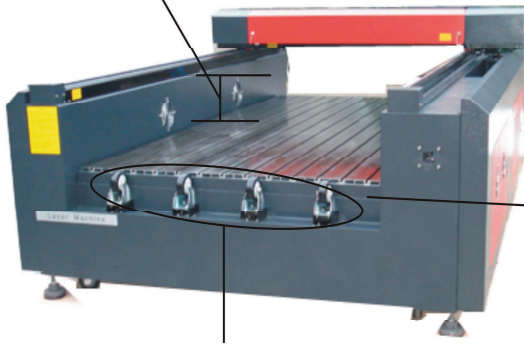


The depth of the machine can depends on your stone.



JQ1325 STONE ENGRAVING LASER for marble, granite etc.

Machine body is strong enough to support 1000kg stones.

Wheels are used to move heavy stones.

JQ1325 working area is 1300*2500mm with wheels on worktable convenient for moving heavy materials.

1. Features of JQ1325

- 1). The machine is designed for large size marbles, stones, granites, gravestones, tombstones and so on.
- 2). Adopt consolidated flatbed, which is able to support 1000kg material.
- 3). There is wheels on the machine worktable, very easy to move heavy and heavy material.
- 4). The worktable is long distance from the laser head to put thick material.
- 5). The laser head is retractable depends on different thickness.

2. Parameters of JQ1325

Model	JQ-1325 Marble/Granite Laser Engraving Machine
Working area	250cm*130cm / 98in*51in (L*W)
Equipment Dimension	3080*2000*1120mm 121*79*44in(L*W*H)
Laser power	60W/80W/100W
Laser type	CO2 sealed laser tube,water-cooled
Engraving speed	0-6000mm/min
Power supply	220V/50HZ , 110V/60HZ
Graphic format supported	BMP, PLT, DST, DXF, AI
Software supported	CorelDraw, PhotoShop, AutoCAD,TAJIMA
Driving system	3 phases stepper motor
Net Weight	1150kg

3. Optional parts

- 1).Partail Up and down work table (makes the machine worktable moves up and down automatically)
- 2).Rotary attachment.(engrave cylinders)
- 3).Red light pointer (make the laser beam visible)
- 4).USB port (make the machine work without a computer)

4. Applicable material

acryl, perspex, glass, wood, stone, marble, gravestone, rubber, leather, fabric, paper, cloth, dual-colour boards.etc

These are samples made on marble or granites by this machine

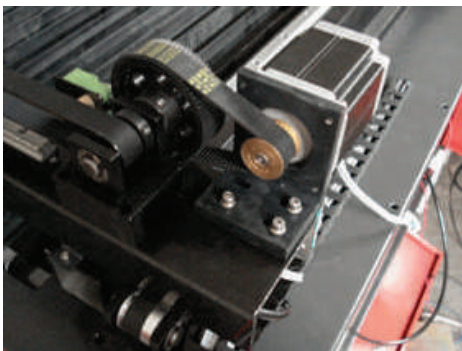


5. Spare parts of JQ1325 laser machine

- 1) Laser tube: 60w/80W/100W best of China with longest life
- 2) Laser power
- 3) Water chiller

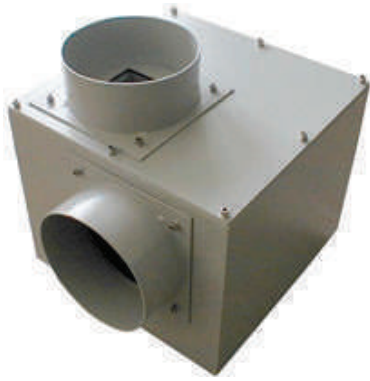


- 4) stepper motor best of Chinese with higher speed
- 5) air pump



6) Exhaust fan, the unit used to remove exhaust produced by material processing.

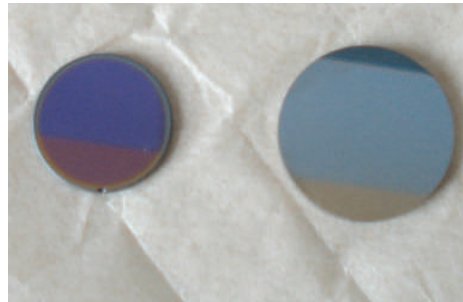
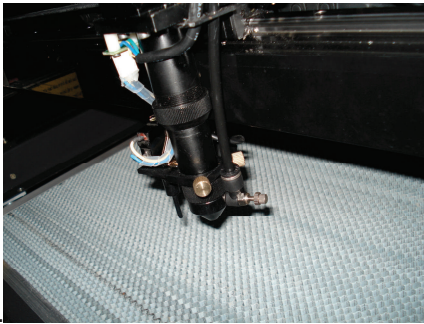
7) Tool box



8) Laser heads with autofocus probe

9) focus(left) and reflect(right) lens (internationally advanced from USA for highest precision)

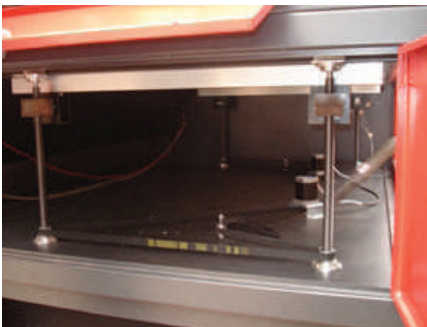
11) Linear rail from Taiwan for excellent stability



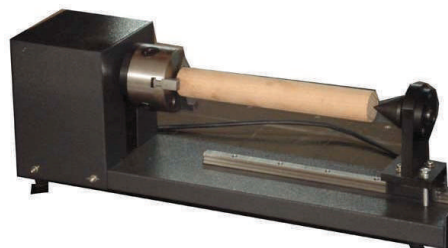
12) Up-down worktable, makes the Z axis moves up and down automatically (optional parts)

13) Rotary attachments, two pieces (optional parts)

14) File bag



With clips to engrave on cylinders



with rollers to engraving on bottles

