

Paper Pattern Cutting Plotter EDO



Product Details:

Brand Name	JWEI
Model Number	EDO-1873A
Tool head	Dual Tool
Transmission System	Servo motor+Straight rail
Control Center	DSP Controller
Control Panel	LCD Touch Screen

- 1.- Servo motor, speed up to 1200mm/s, with high accuracy, no noise, no vibration.
- 2.- Dual tool head with a plotting pen and a cutting knife.
- 3.- Extreme ease-of-use touchable screen panel.
- 4.- Wise print arrangement with JW driver.
- 5.- Option with the advanced automatic paper feeder function.
- 6.- Standard I/O interface including ethernet and serial port of HPGL format.
- 7.- Be able to connect with any CAD software.

Detailed Product Description

Flatbed Paper Pattern Cutting Plotter

- 1) CE certificated
- 2) Servo motor driver
- 3) DSP control center
- 4) LCD touch screen

Specification:

Model Name	EDO-1873A
Configuration	Flatbed, work with computer sync and not speedily; work consecutively
Max. Speed	Up to 1200mm/s
Max. Cutting Depth	2mm
Cutting Media	All kinds of hard cardboard and plastic board, fibrous cardboard, rubber sheet and marking film etc.
Dual Tool System	Multi-functional set, 8 sets of different including pen, kiss-cut and full cut
Pen & Blade Types	Water-based fibertip pen, oil pen, a special tungsten carbide blade
Media Set Device	Vacuum suction
Repeat Precision	≤0.05mm
Programmable Resolution	0.025 / 0.01 / 0.1 available
Interface	Serial Port and Ethernet Port
Buffer Memory	1G
Command Sets	HP-GL compatible format
Control Panel	Touch screen
Transmitting system	Digital servo driver; straight rail; synchronous belt.
Power Supply	AC 220V ±10%, 50HZ / 3 KW
Fuse	6A 30A
Operating Environment	10 to 35 deg.C
Effective Cutting Area	1500mm×1200 mm

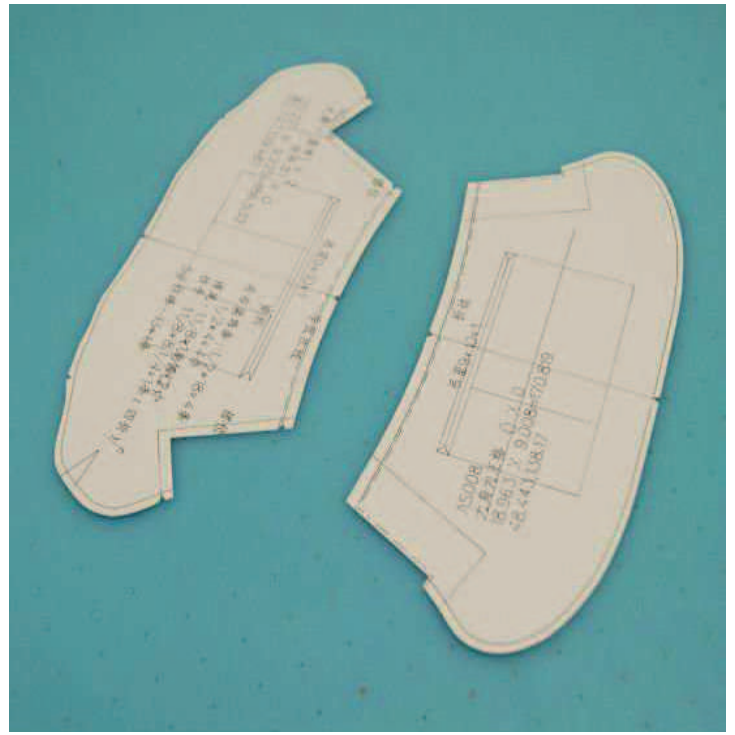
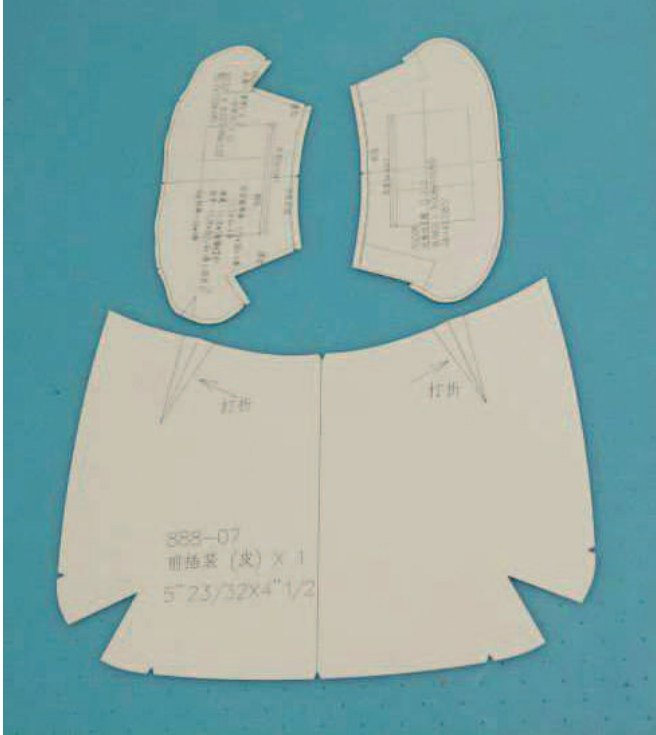
Dual-tool Head:



Apparel Pattern:



Bag&Suitcase Pattern:



PVC:



Gasket:

