

**OLFA**®

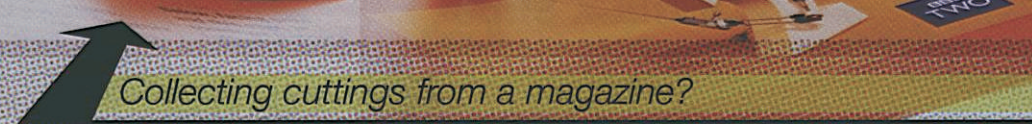
THE ORIGINATOR SINCE 1956

TOP SHEET CUTTER

MODEL:

**TS-1**

OLFA MADE IN JAPAN TS-1



*Collecting cuttings from a magazine?*



*Looking for a better cutting tool for clipping out of a newspaper?*

PATENT PENDING

**Incredible as it may seem,  
the TS-1 cuts only the top sheet!**

# A cutting tool which cuts only the top sheet

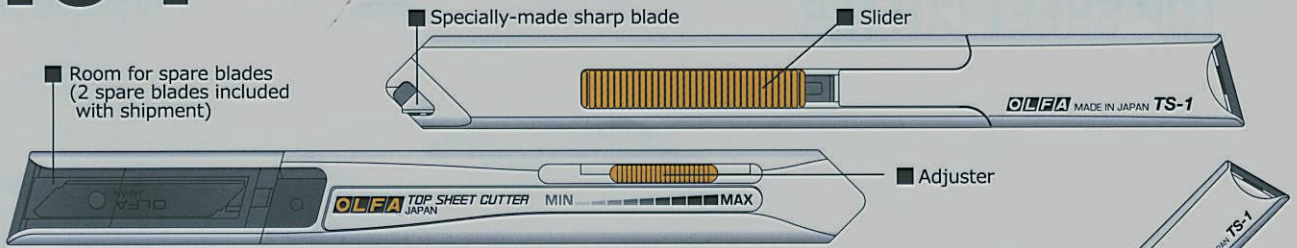
MODEL:

## TS-1

**No underlay necessary; cut freely, off the top of your head!**

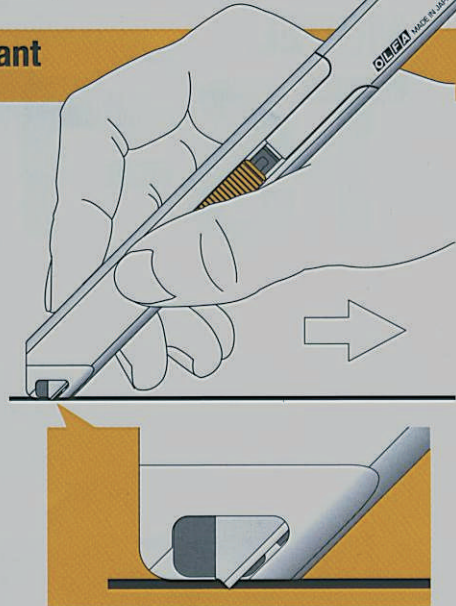
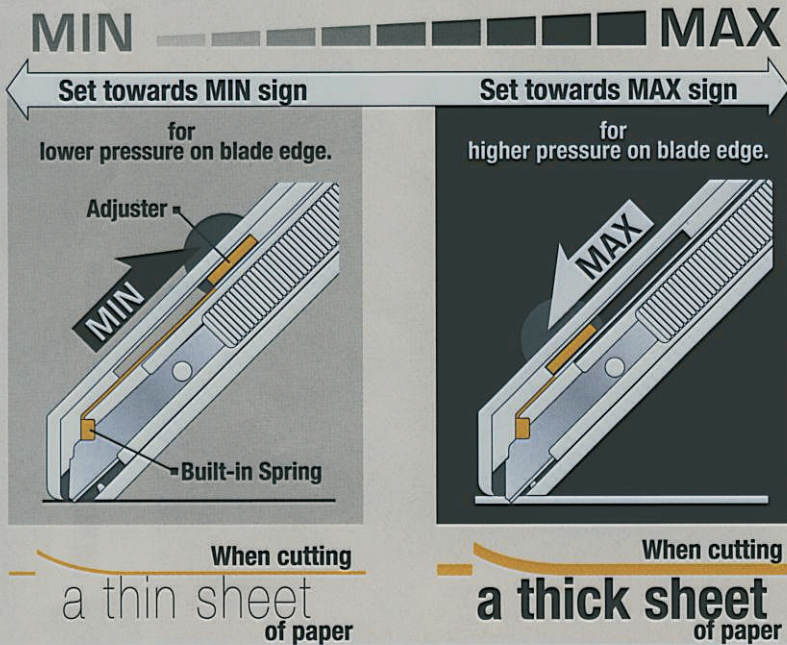
The TS-1 cuts only the top sheet without being influenced by user's power adjustment. One TS-1 cuts a variety of papers: from a thin piece of newspaper to a thick cover of a magazine.

**PATENT PENDING**



**The pressure that hangs to the tip of the blade is kept constant by its built-in spring's working.**

Cutting pressure can be controlled continuously by the adjuster on the back of the main body.



Hold the TS-1 as you hold a pen, and give it enough pressure to leave no space between the TS-1 and a sheet of paper while cutting.

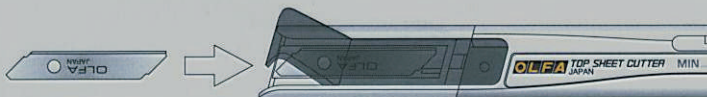
Trial cut is highly recommended while adjusting cutting pressure. Place an underlay to avoid the possibility of damage to the second sheet, especially when you are never able to damage the sheet of paper below.



① Make sure blade is retracted.



② Pull out spare blade case, let the slider go backward, and then exchange blades.



### SPARE BLADE

**TSB-1**



The "TS-1" takes the dedicated blade "TSB-1" only.

Please pay attention to the direction of blades when you store blades in the spare blade case.