

Search Item ➤

- 👉 Cutters & Knives
- 👉 Spare blades
- 👉 Accessories
- 👉 GOOD DESIGN awarded products

Main Menu ➤

- 👉 What's new?
- 👉 Birth of OLFA cutter
- 👉 How to use OLFA cutters properly.

About OLFA ➤

- 👉 OLFA blade
- 👉 Why yellow?
- 👉 Why OLFA?

[👉 Back to Home](#)

How to use OLFA cutters properly.

OLFA cutters and knives are used everyday in a variety of applications worldwide.

To ensure safety while using OLFA products, please follow some guidelines

**1**

Be sure to use the appropriate cutter and blade according the material and the thickness being cut. For example, "Do not try to cut plywood with the standard duty cutters."

**2**

When extending a blade segment, be sure to keep the top of the segment within the blade sheath.

**3**

Use a good cutting edge. It will help to ensure safety and eliminate damage to your project and assure a crisp clean cut.

**4**

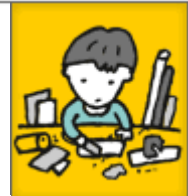
Use OLFA's safety blade disposal case or snap-off the dull edge by using pliers.

**5**

You should have an OLFA mat as your cutting base. OLFA cutting mat will help eliminate damage to the surface of your work area and help the blades last longer.

**6**

Before beginning a project, be sure to organize your work area.




7

Be alert using a cutter. If you are exhausted or in a hurry, please be careful.

**8**

Always be sure to store safely blade in the handle and keep it away from children. It is also important to keep knives put away in a constant location.



 **Top of this page**

OLFA®

Copyright © 2004 OLFA CORPORATION. All Rights Reserved.